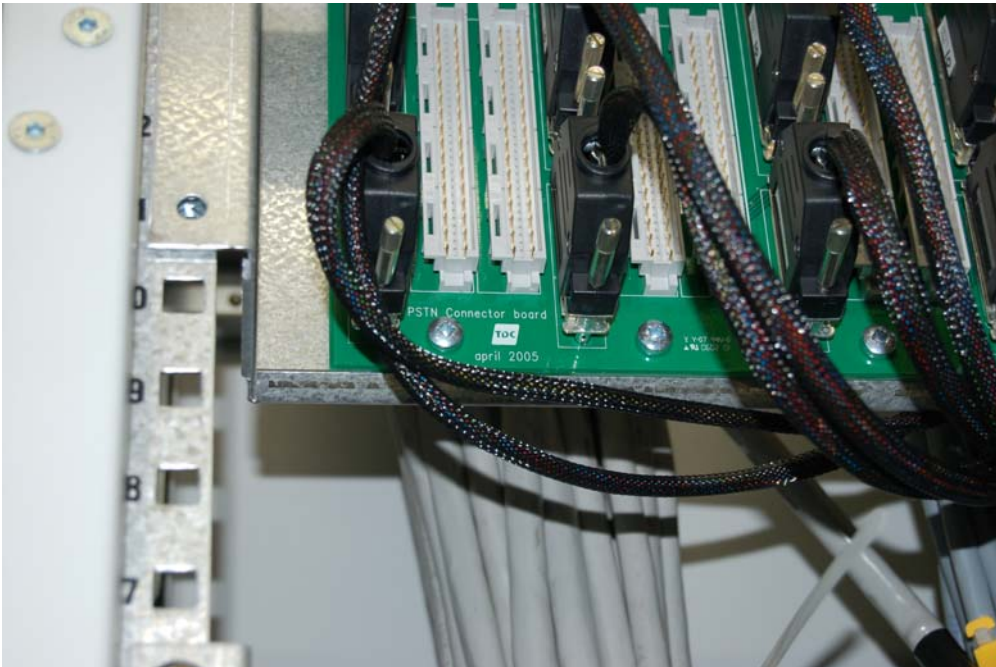


Migration of RSS/SSS to new ASM / EAR

Install the new ASM or EAR on location

Install standard 19" rack and mount Connector boards

Delivered MDF cables are mounted with Canon 25 and 9 pin plugs according to wiring diagram



PSTN Connector Board



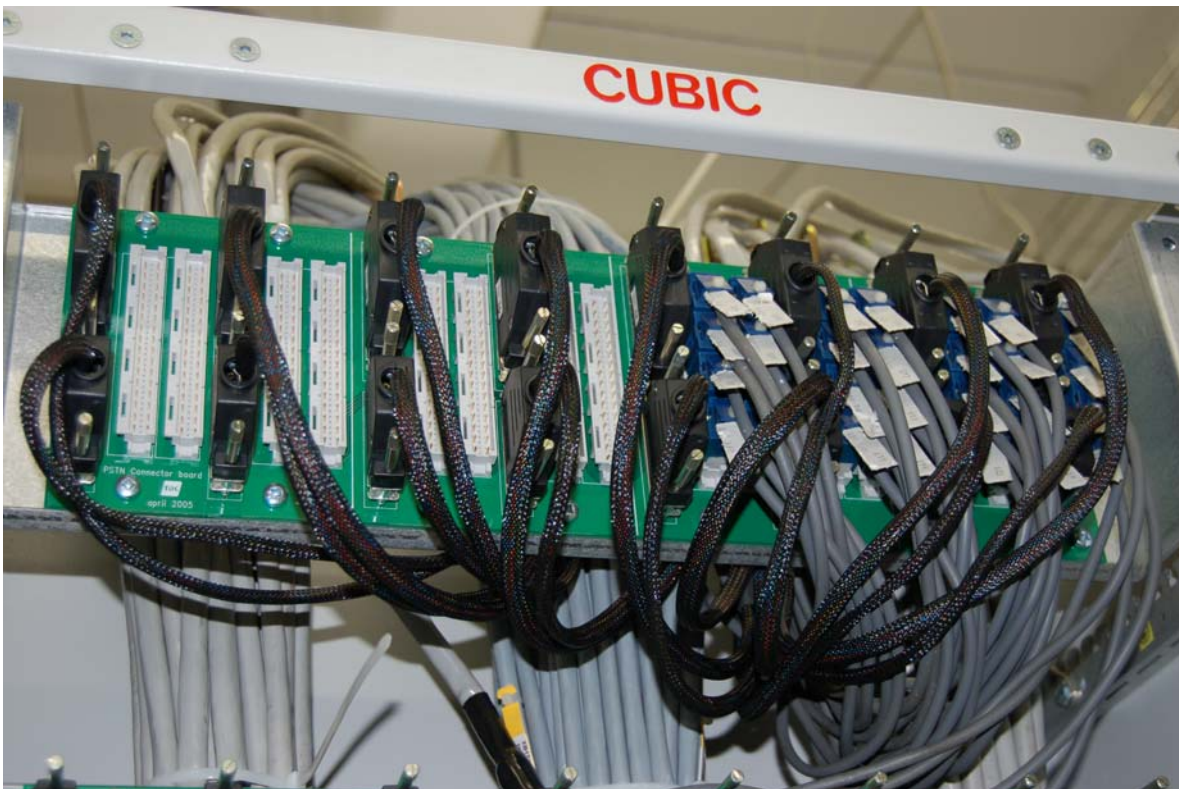
Connect ASM / EAR subscriber interfaces with Connection boards

Define C1 and C3 data using Figaro or ConvEx

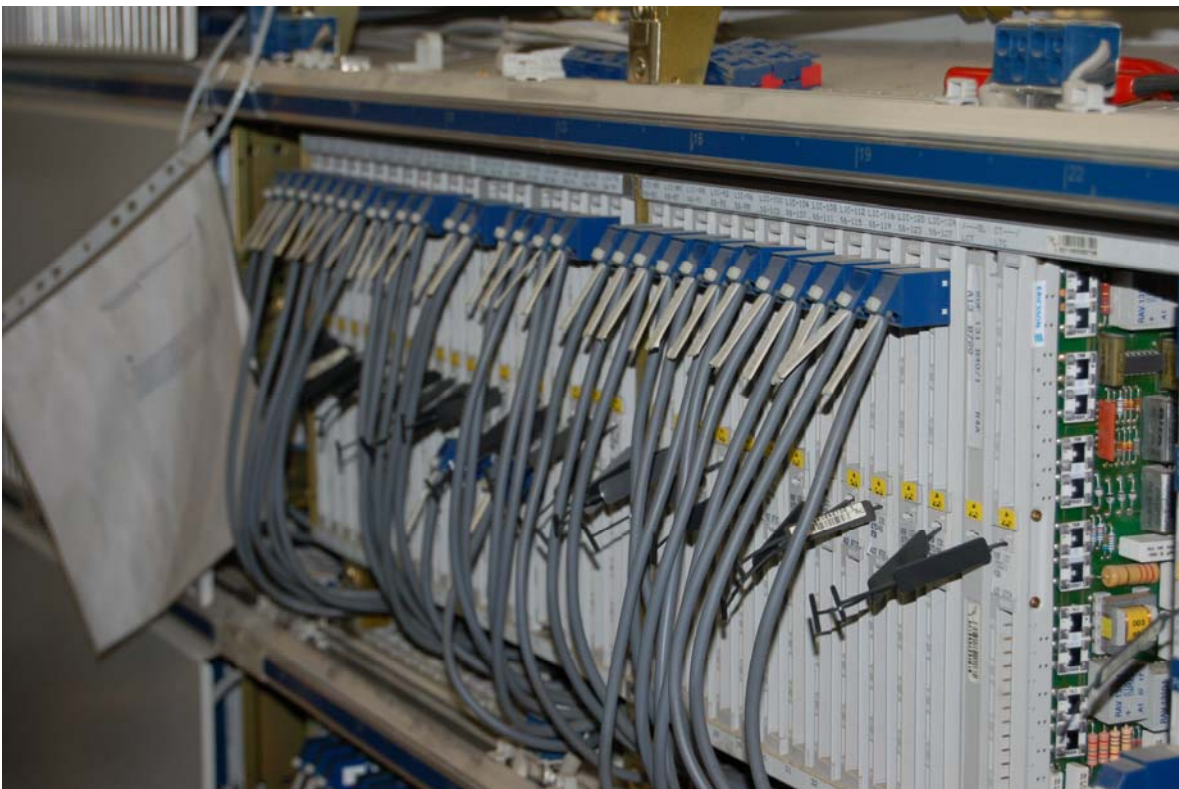
Bring ASM / EAR into service

Test all new hardware

ASM stage 2130 subscribers and 19" Rack with PSTN connectors to 2048 subscriber.



Test subscriber interfaces with Local Call Simulator from the extended interface on Connector Board



Existing cabling before cut over



Disconnect existing cabling in the LSM magazine.



Mount eventually temporary cabling to MDF to maintain service during switchover



Temporary cabling mounted in MDF



Existing cables can now be disconnected from the old equipment

The access to the customers is now on the temporary cable



Existing cables can now be moved to the rack with PSTN connectors.

SNB numbers must be converted from LI3 to new LIMA devices.

Define an extra PXR with DETY=LIMA for each PBX headnumber involved using Figaro

Turn on MaxSus and enter values to Device Grid

Devices and Sequences							<input checked="" type="checkbox"/> Use Factor Global
DETY	From	To	Factor	New from	New to	New DETY	
LI3	10240	10367	-10240	0	127	LIMA	

8 Rows in grid

[Single Read](#) [Single Migrate](#)
[Clear Row](#) [Clear Column](#)
[Clear From](#) [Clear Grid](#)
[Add Row](#) [Delete Row](#)
[Delete Last](#) [Delete From](#)

MaxSus Device Grid

Select Change mode

Connect to the same host AXE for both MaxSus terminals and set destination to Terminal

Select MaxSus Options and use the new PRX for PBX subnumbers

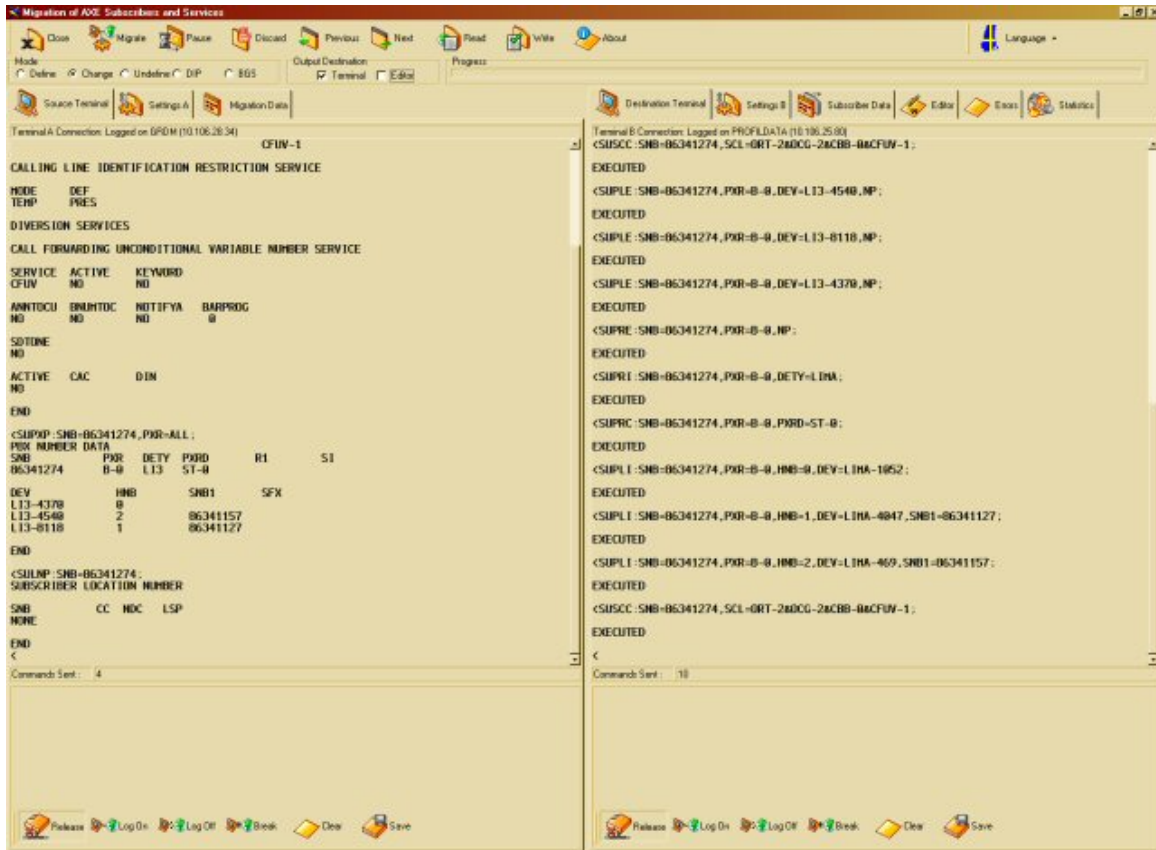
<p>Define and Change Mode</p> <p><input type="checkbox"/> Proceed with EXNSI:L= <input type="text" value="2"/></p> <p><input checked="" type="checkbox"/> Include Connection</p> <p><input checked="" type="checkbox"/> Include Classes</p> <p><input type="checkbox"/> Include Location Number</p> <p><input checked="" type="checkbox"/> Include Special Equipment</p> <p><input checked="" type="checkbox"/> Include Services</p>	<p>BGS Mode</p> <p><input checked="" type="checkbox"/> Include Connection</p> <p><input checked="" type="checkbox"/> Include Business Group</p> <p><input checked="" type="checkbox"/> Include PBX</p> <p><input checked="" type="checkbox"/> Include Number Serie</p> <p><input checked="" type="checkbox"/> Include End of Selection</p> <p><input checked="" type="checkbox"/> Include B-Number Analysis</p> <p><input checked="" type="checkbox"/> Include Private Network</p> <p><input checked="" type="checkbox"/> Include Property</p> <p><input checked="" type="checkbox"/> Include Classes</p> <p><input checked="" type="checkbox"/> Include Services</p>
<p>Change/BGS Mode</p> <p><input type="checkbox"/> Undefine before change</p>	
<p>Notifications</p> <p><input type="checkbox"/> Not connected</p> <p><input checked="" type="checkbox"/> PBX</p> <p><input checked="" type="checkbox"/> PNB</p> <p><input checked="" type="checkbox"/> Private meter</p> <p><input type="checkbox"/> End of selection</p> <p><input checked="" type="checkbox"/> Business group</p> <p><input checked="" type="checkbox"/> Routing case</p> <p><input checked="" type="checkbox"/> Test number</p>	
	<p>Define and DIP Mode</p> <p><input checked="" type="checkbox"/> Include Layer 1</p> <p><input checked="" type="checkbox"/> Include Layer 2</p> <p><input checked="" type="checkbox"/> Include Layer 3</p>
<p>PBX Handling</p> <p><input type="radio"/> Ignore PBX</p> <p><input type="radio"/> Include entire PBX when headnumber is read</p> <p><input checked="" type="radio"/> Migrate PNB when read using FXR- <input type="text" value="B-2"/></p>	

MaxSus Options in Change Mode

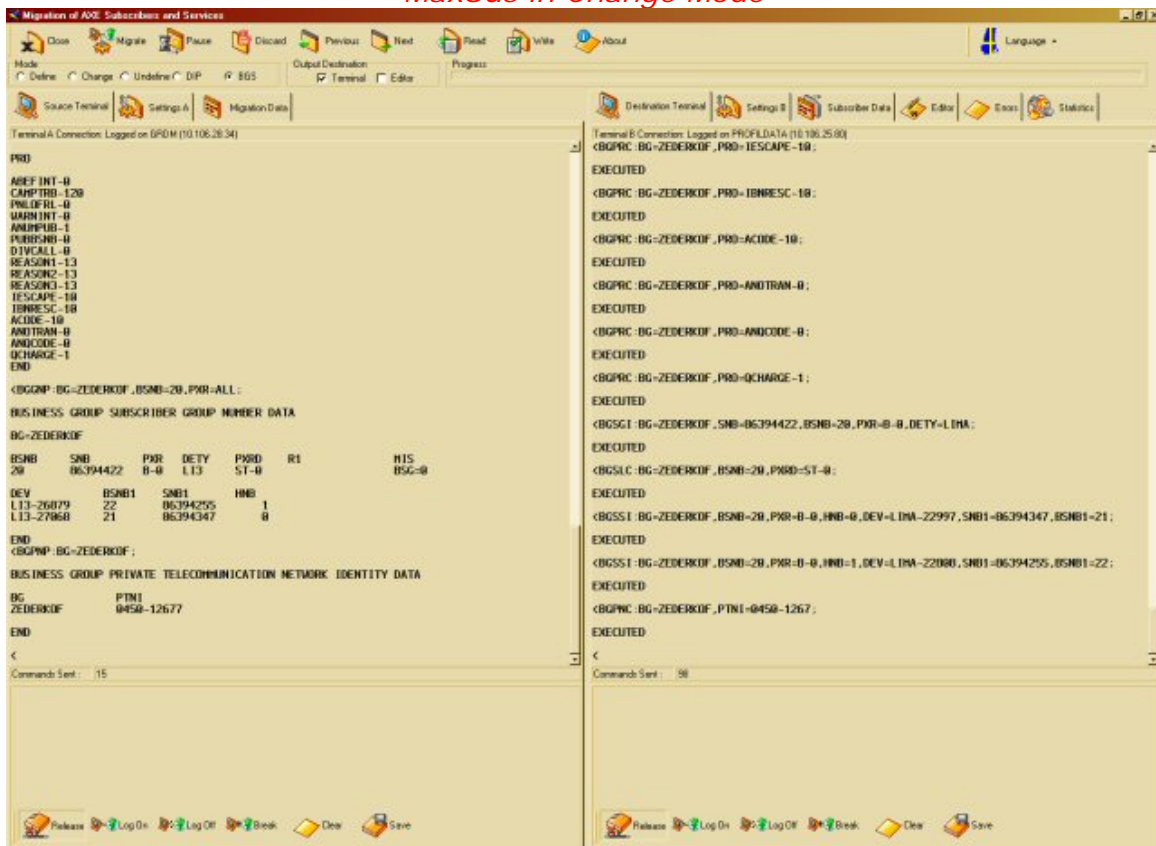
Press the Migrate button and watch the progress. Old SEPRM devices are automatically converted to new centralized PRM.

If you are notified about BGS subscribers, switch to BGS mode and handle the DT.

Old cross connect wires for SEPRM devices must be replaced with direct connection, to maintain service when old SEPRM magazine is disconnected.



MaxSus in Change Mode



MaxSus in BGS Mode



Remove eventually temporary cables

The old LSM is now released.

Test all boards in released LSM using Figaro | Liax and pack fault free boards for reuse another place.

Repeat procedure for remaining LSM's.

One full equipped EMG is easily migrated during one night without temporary cables or during two days with the cables.